

Dear Camp Nesher Families,

We are thrilled that your children will be joining us this summer! The following pages are designed to answer some commonly asked questions and provide you with important information. Every child at Camp Nesher is precious and unique - we strive to provide an environment that will enable each camper to have the best summer camp experience possible. Please partner with us by following these guidelines and help us create the atmosphere that makes Camp Nesher so special. See you this summer!

TABLE OF CONTENTS

■ Camp Calendar.....3	■ Camp Rules and Policies.....8
■ Important Camp Information.....4	■ Canteen Information and Camper Cash.....9
■ Arrival at Camp.....5	■ Dress Code Rules.....10
■ Camp Packing List.....6-7	■ Medical Care Info.....11
■ What <i>Not</i> to Pack..7	

Jeff Braverman
Director



Johnny Shlagbaum
Associate Director



Adina Lipson
Assistant Director



Moshe Sanders
Assistant Director



2025 NESHER CALENDAR

Opening Day: Monday, June 30th

Visiting Day in Camp: Sunday, July 20th • 10AM - 4PM

1st Session Ends: Monday, July 28th

2nd Session Begins: Tuesday, July 29th

Camp Ends: Monday, August 18th

SHORT STAY DATES:

Tuesday, July 29th - Wednesday, August 6th



IMPORTANT CAMP INFORMATION

ACCESSING YOUR CAMPER'S ACCOUNT, FORMS, AND OTHER INFORMATION

Your family has its own login and profile where you are able to manage family information, camp finances and complete required forms for each of your campers.

- Go to www.campnesher.org/login to access the log-in.
- Enter your account email address.
- If you know your password, please enter it. If not, select Retrieve/Set Password on the bottom right to retrieve your password.
- Download the Campanian app to access forms, send your camper emails and see pictures!

Camper forms are an integral part of our summer preparation - the information you share is used to help prepare staff to better care for your child. Bunking requests, medical forms, photo upload and the camper questionnaire can all be found in your CampMinder account under Forms and Documents. You will also find a packing list, code of conduct, electronics policy, helpful links and more. As we get closer to the summer, we will advise you, should additional forms and information be added.

LETTERS AND PACKAGES

- Please send your campers with stationary & stamps. Self-addressed stamped envelopes work best.
- Campers may receive but not send emails.
- **Email Instructions will be sent separately along with information about our Campanian app.**
- All packages will be opened by an office staff member in the presence of your camper.
- Please do not send any food to camp, as it will be confiscated. Please share this policy with anyone who might wish to send a package to your camper.

SUMMER MAILING ADDRESS:

YOUR CAMPER'S NAME

C/O CAMP NESHER

90 WOODS ROAD

LAKEWOOD, PA 18439-3943



ARRIVAL AT CAMP

LUGGAGE

We encourage families who reside in the NY/NJ/CT Tri-State metropolitan area, Philadelphia or South Florida, to ship luggage through Camp Trunk Delivery. Registration for this service, which includes door to door pickup/drop-off, is at www.camptrunkdelivery.com. Campers outside the CTD pickup areas may ship their luggage via UPS or FEDEX or drop-off at camp.

Please note: Luggage and cases of water will not be allowed under the bus unless otherwise permitted by the Camp Director.

TRANSPORTATION

Finalized transportation details for the bus trip to camp will be sent several weeks before camper departure. If your camper is arriving via air travel, please contact us before booking flights - all air travel must be arranged through Newark's Liberty Airport. Unless your camper is arriving from an international destination, we require that all luggage be shipped directly to camp, in advance of arrival.

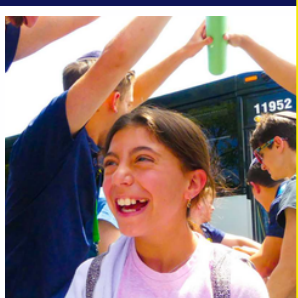
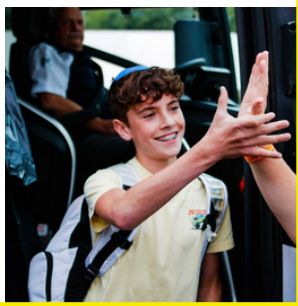
BUNK REQUESTS

When bunking campers we consider the following, in priority order: 1) Session 2) Reciprocal requests 3) Neighborhood and/or school. Please include the full names of requested bunkmates. If more than two requests are submitted, only the first two will be considered. We make every effort to accommodate at least one request per camper. Please submit requests by **May 5th**.

Campers will be informed of their bunk placement upon arrival at camp.

2025 CAMP NESHER T-SHIRT

Upon arrival to camp, each camper will receive a 2025 Camp Neshers t-shirt. **Check out our amazing line of Camp Neshers swag at www.thecampspot.com!**



CAMP PACKING LIST

CLOTHING

- ☐ 12 T-Shirts
- ☐ 10 Shorts (Knee Length)
- ☐ 2 Long Sleeved Shirts (Casual)
- ☐ 3 Sweatpants
- ☐ 2 Sweatshirts/Fleeces
- ☐ 1 Rain Poncho or Hooded Raincoat
- ☐ 3 Warm Sleepwear
- ☐ 3 Light Sleepwear
- ☐ 28 Pairs of Socks (& Safety Pins for Laundry)
- ☐ 18 Pairs of Underwear
- ☐ 4 Bathing Suits (No Bikinis)
- ☐ 3 Baseball Hats
- ☐ 2 Jeans/Pants
- ☐ 3 Casual Skirts (Knee Length)
- ☐ 2 White T-Shirts - for Tie Dye
- ☐ 1 Belt

FOOTWEAR

- ☐ Flip Flops/ Slides
- ☐ Sneakers
- ☐ Waterproof/Rain Boots
- ☐ Non Leather Shoes (for Tisha Ba'av)

SHABBAT CLOTHES FOR GIRLS

- ☐ 4 Modest Dresses, Skirts, & Blouses
- ☐ 1 Pair Shabbat Shoes

SHABBAT CLOTHES FOR BOYS

- ☐ 3 Dress/Collar Shirts & Slacks
- ☐ 2 Casual Shorts
- ☐ 1 Pair Shabbat Shoes

TOILETRIES

- ☐ Toiletries Case
- ☐ Toothbrush
- ☐ Toothpaste
- ☐ Cup
- ☐ Liquid Soap
- ☐ Box Facial Tissues
- ☐ Shampoo
- ☐ Conditioner
- ☐ Bodywash
- ☐ Comb, Hairbrush
- ☐ Deodorant*
- ☐ Bug Repellent*
- ☐ Sunscreen*

*Non-aerosol

BEDDING

- ☐ 1 Heavy Blanket or Comforter
- ☐ 2 Fitted Cot Sheets
- ☐ 2 Flat Cot Sheets or Duvet Covers
- ☐ 2 Pillow Cases
- ☐ 1-2 Pillows
- ☐ 3 Beach Towels
- ☐ 3 Bath Towels
- ☐ 2 Face Towels

SPORTS EQUIPMENT (OPTIONAL)

- ☐ Swim Goggles
- ☐ Tennis Racquet (Camp Provides)
- ☐ Baseball Mitt

Hockey Safety Equipment:

- ☐ Glove & Helmet with Face Mask
- ☐ Wrist Guards, Elbow & Knee Pads
- ☐ Protective Cup for Boys
- ☐ Rollerblades (for hockey) - optional;
Safety Equipment Mandatory

OTHER

- ☐ 1-2 Laundry Bags
- ☐ Duffel Bags/Soft Trunks
- ☐ Reusable Water Bottle
- ☐ Flashlight & Batteries
- ☐ Hanging Shoe Bag for Small Items (optional)
- ☐ Hair Dryer (optional)
- ☐ Hangers
- ☐ Paper, Pens, Pre-Stamped/Addressed Envelopes
- ☐ 1 Portable Fan (Battery operated recommended)
- ☐ Tefilin for Boys
- ☐ 4 Kippot for Boys
- ☐ 3 Tzitzit for Boys

WHAT NOT TO PACK:

- Food
- Animals/Pets
- Walkie Talkies
- Mini Fridges
- Computers
- Knives
- Weapons
- Cell/Smartphones
- Fireworks/Matches
- Extreme Water Guns
- Video Cameras
- Heelies/Skate Shoes
- Skateboards, scooters, etc.

Please be aware of what your child is bringing to camp. If an item is questionable, please don't send it.

In accordance with American Camp Association accreditation standards, be advised that illegal substances, alcohol and weapons are not allowed in Camp. Usage or possession of any of these, including tobacco, e-cigarettes and vaping paraphernalia by any camper, will result in immediate dismissal.

SPORTS EQUIPMENT:

- Camp provides equipment for the Athletics program although campers are also welcome to bring their own.
- For hockey players, please send all necessary protective gear, including a mandatory protective cup for boys.

Please label all items clearly!

CAMP RULES AND POLICIES

CELL PHONES AND OTHER ELECTRONICS

- This policy is intended for everyone's security, privacy and well being. It is difficult to cover every "electronics" situation on this page therefore we turn to our parents, to act as partners, in ensuring that their children do not come to camp with anything that resembles the items detailed here.
- **Campers may not possess cell phones, smart watches (i.e Apple watch) or anything with data capability, including those without SIM cards. Please do not send them to camp with your child. Campers found to be in possession of a cell phone or found to have used a cell phone will face a 3-day suspension from camp.**

We discourage but do allow campers to bring the following items to camp:

- **Mp3 players:** Only music is permitted. Please delete all videos before your camper comes to camp. If videos are found on a device and cannot be removed, it will be confiscated.
- **Gaming and E-Book devices:** Only without movies or data capability. We allow games rated for general audiences only. Inappropriate games and devices will be confiscated.
- **Cameras:** may never be used inside or around the bunk area.

Please reconsider allowing your child to bring expensive electronics to camp. Camp will not be held responsible for loss, damage or theft of electronic devices.

PHONE CALLS

- Campers may call home on their own and their parent's birthdays.
- Please allow our staff 24 hours to return your call if you leave a message for us.
- Campers may never have cell phones with them in camp.

FOOD IS NEVER PERMITTED IN BUNKS

- Food, gum, soda, etc. are strictly not permitted in bunks- please do not send them with your campers. Only bottles of plain, unflavored water permitted.
- Cases of bottled water may be ordered through your camper's online account and will be delivered directly to them at their bunk.

TIPPING

- There is a strict NO tipping policy at Camp Nesher. If you wish to acknowledge a particular staff member in a special way, please make a tax-deductible donation, in his or her name, to our scholarship fund online. The staff member will receive notification of your donation without details of the donation amount.

CANTEEN

- During breakfast, campers receive a “menu” from which they may “order” one item to receive at canteen-time later that day. This item is included in your camp tuition.
- **Extra-Canteen:** We offer an Extra-Canteen option that allows campers to choose two items for their daily canteen-time instead of one. You can opt-in by logging into your Campminder account (or the Companion app) and clicking on “Forms and Documents” - click on Extra-Canteen.
 - **Please note: this is the ONLY way a camper can receive a second item during canteen time.**

CAMPER CASH

- Camp Nesher is “cashless” so please do not send money with your camper.
- If you would like your child to have spending money at Camp, you can “deposit” funds in a Camper Cash “account” by logging in to your Campminder account and clicking on “View Camper Cash” under the “Your Family” section. The account will be funded using the same payment method you have saved for all other necessary camp transactions. You will have access to your camper’s account, be able to fund and view how their money has been spent. Remaining Camper Cash balances can either be rolled over to the following year as a credit on your account or donated to Camp’s Scholarship Fund.
- Camper Cash can be used for:
 - Purchases of drinks or snacks at the canteen OUTSIDE of canteen time noted above
 - When applicable, special excursions to the local pizza or ice cream store or for canteen purchases when/if visiting other camps for intercamp games
- **Spending money for day-trips OUTSIDE of camp (3rd-8th grade campers):**
 - Most amusement parks are now strictly “cashless” therefore:
 - In lieu of you sending cash as spending money, we have arranged for every camper to receive a Visa debit card for use outside of camp.
 - We will charge your Campminder account \$25 plus the cost of the card.
 - Cards with balances will be sent home with campers.
 - Should you prefer that your camper NOT have spending money for outside trips, please advise us, in writing, NO LATER THAN June 1st.
- **For 9th and 10th grade campers only:** Please send a credit or debit card with your camper for overnight trips. As an alternative, since they are permitted use of their phones for these trips only, you may load a form or payment directly on their phones.

CAMP NESHER DRESS CODE

DRESS CODE IS NOT OPTIONAL. It is a matter of Tzniyut (modesty), which we take seriously. We assume that, in choosing Camp Neshet for your child, you share, or at the very least, understand, the hashkafa (philosophy) of our program. While the responsibility of implementation of that philosophy, during the camp season, lies in our hands, we cannot properly fulfill it without your cooperation and attention during the packing process.



GUIDELINES

- No tank tops, sleeveless shirts, see-through shirts or shirts with wide, low or revealing necklines.
- No inappropriate writing on clothing is permissible.
- Bottoms with any form of writing across the back may not be worn.
- Bathing suits should be shorts - type for boys and a one-piece or tankini for girls (no bikinis).
- **Appropriate Shabbat Attire:** Slacks and collar shirts for boys; modest, knee-length skirt or dress for girls.
- **Girls:**
 - Shorts and skirts must reach the top of the knee. Absolutely no short-shorts and biker shorts.
 - Leggings may only be worn under appropriate skirts or shorts.
 - No body piercings other than earrings are permissible.
 - Skirts are required for *tefillah*.
- **Boys:**
 - Are asked to wear *tzitzit* and a *kippah* or hat.
 - Only *kippot* on Shabbat please.
 - No piercings permissible.

MEDICAL CARE AT CAMP NESHER

Our Health Center includes nurses and a physician on premises. It is Camp's policy to call parents when a child needs a prescription or a visit to a physician/hospital outside of camp. We will notify you if your child spends a night in the Health Center.

REQUIRED CAMPMINDER ONLINE FORMS– DUE BY MAY 5TH:

1

All medical and prescription insurance policy information recognized in the United States

2

Legible photocopy of both sides of camper's medical insurance card.

**CAMPERS WILL NOT BE PERMITTED IN CAMP
WITHOUT THESE FORMS COMPLETED.**

MEDICATION AT CAMP

- In our ongoing commitment to ensure the safety of campers who will be taking medications, vitamins or supplements on a daily basis while at camp, we have selected J Drugs, a pharmacy who supplies pre-packaged medications, to supply medications to our campers for the upcoming summer season.
- Our policy for dispensing medicine requires ALL campers who take medication daily to use J Drugs to package their prescription medications, over the counter medications, vitamins and supplements. PARTICIPATION USING J DRUGS IS MANDATORY
- For more information regarding medication at camp please see the J DRUGS REGISTRATION form on your CampMinder account.
- Registration can be found at: www.campnesher.org/jdrugs

PLEASE SEND YOUR CHILD TO CAMP LICE FREE!

- Every camper is checked for lice.
- Anyone with lice/nits may not rejoin his/her group until s/he is lice-free.
- If your child is found to have lice/nits, a professional will treat your child at camp
 - Note that this service is approximately \$300.



CAMP NESHER



IMPORTANT CONTACT INFORMATION:

- Winter Office Phone: (973) 575-3333
- Summer Office Phone: (570) 798-2373
- Campspot (Outfitter): (800) 705-2267
www.thecampspot.com
- Camp Trunk Delivery: (201) 836-0904
GOCTD.Com (enter your email address & password Neshers)

www.campneshers.org
facebook.com/campneshersNJY
instagram.com/campneshers